



SustainableSchmidt.com



## SUSTAINABLE WATER

Design for Conservation

**Reduce Impact** Top loaders use a lot of water – 20-25, over 30 gallons per cycle. When it's time for you to replace your laundry machine, get a front loader like this one. The agitator is on the side, the water only has to fill up to here. A machine like this can use only a couple of gallons per cycle.



Above: Low Water Usage Landscaping  
Below: Water Saving Bathroom



Water Savings  
Left: 2.5 Dual Flush Toilet  
Above: Low Flow Shower Head



sustainable  
schmidt

### Sustainable Water

- Front Loading Washing Machine
- Dual Flush Toilets
- 2.5 Gallon Per Minute Fixtures
- Low Water Using Landscaping
- Energy Star Rated Dishwasher

### Sustainable Power

- Solar Photovoltaic Panels
- Energy Star Rated Household Appliances
- 97% Efficient Phoenix Water Heater
- Multiple Skylights
- Extreme Insulation
- Blown Cellulose
- Recycled Cotton
- Spray Foam

### Sustainable Materials

- Recycled Material Counter Tops
- LED & Energy Star Rated, Dimmable Fluorescent Lighting
- FSC Certified Custom Bamboo Cabinets
- FSC Certified Structural Wood Framing (2x4's, 2x6's)
- FSC Certified Decking
- FSC Certified Base Boards, Trim & Doors
- Fly Ash Concrete

EXCHANGING IDEAS ABOUT SUSTAINABLE HOMES

www.sustainableSchmidt.com

© this brochure was printed on recycled stock, using soy based inks.



### SUSTAINABLE MATERIALS

Design for the Environment



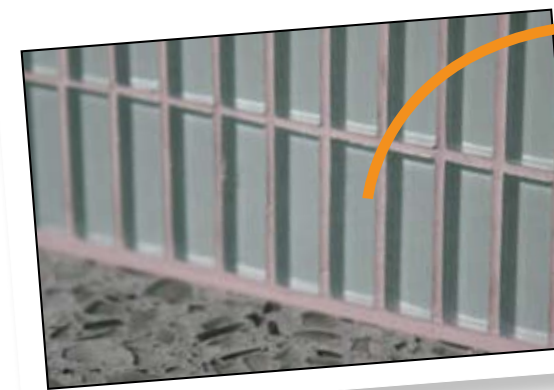
Insulation  
Left: Blown Cellulose Foam  
Below: Recycled Cellulose (old phone books used in the walls)  
Bottom Left: Cotton Bats (old blue jeans)



Above: Solar Panel and Skylight  
Below: Kitchen

### SUSTAINABLE POWER

Design for Energy Savings



Above: Recycled Glass Tile Counter Top  
Right: Energy Star Rated Microwave  
Below: Phoenix Water Heater  
Bottom Right: Dimmable Florescent Lights



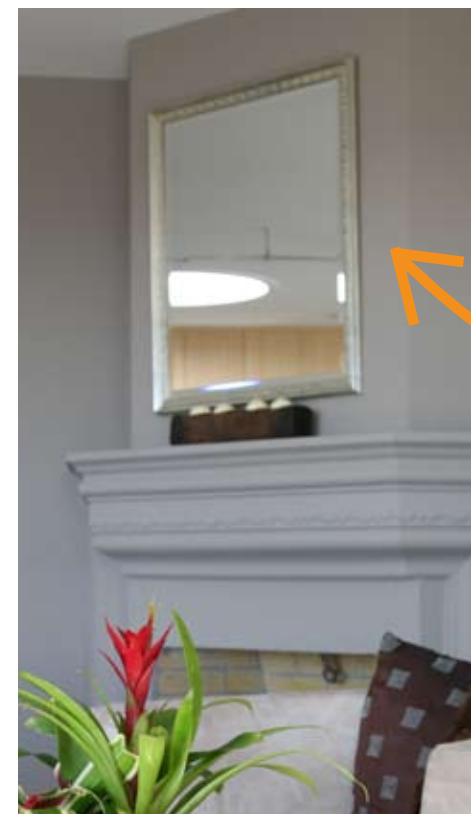
**Save Energy** Install Energy Star rated household appliances dimmable fluorescent lighting, and a 97% efficient Phoenix Water Heater.



Above: Living Room  
Below: Fireplace

### Responsible Wood Choices

Whenever possible use wood that's been certified by the Forest Stewardship Council. FSC certified wood comes from responsibly managed forests, so consider this approach for such a precious resource.



**Talk about something that can make you hot, insulation.** But just doing it isn't good enough, you have to do it right. Use non-toxic foams, recycled cellulose, which is paper, or recycled cotton bats, which are old blue jeans – they will keep you warm in the winter, cool in the summer, save you money, and don't add hazardous waste to the environment when you remove them.

